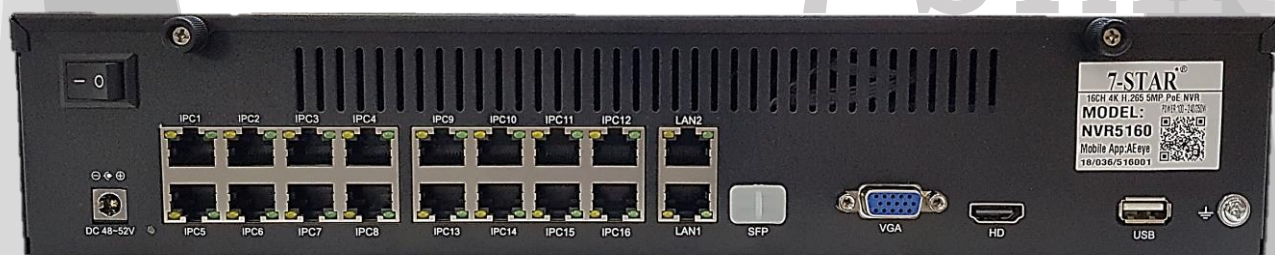


7-STAR[★]

**H.265 5MP POE NVR with VGA +1ch HDMI output
CCTV Onvif 5mp/3mp/2mp 16CH IEEE802.3Af
1080P Network Recorder P2P POE NVR**



Manual



AEeye

7-STAR[★]



AEeye



Main Features:

Support H.265 dual stream video input 2-port SATA HDD interface inside, support max 6TB 3.5" Per HDD. 16 ports PoE power supply IEEE802.3af Global standard, support PoE camera/PoE splitter.

HDMI/VGA monitoring output: 1080P full HD, multi-channel mixed split screen, automatic main/sub stream preview Support camera Motion detection alarm signal input control recording(need camera support).

P2P technology: Support IOS/Android APP remote view.

Adopt HDD sequence writing method and the data is written from 0 track which increase 2.5X lifetime of the HDD Support ONVIF protocol, support multi-brand IP camera.

CMS PC software view.

support 4 screen the main circulation preview, synchronous playback support 4ch Provide network centralized monitoring management software.

1, Preview images freely exchange, image position changes, physical address, convenient construction;

2, Can drag the tree menu, man-machine dialogue more directly, it is more convenient to set parameters;

3, Electronic amplifier, the mouse roller can realize 15 times images can be arbitrary drag (preview, playback);

4, Instant screen shots and can check directly, the screen shots are saved independent regional preservation in the hard disk;

5, Video playback time column display, video type with that color, video query is very convenient;

6, Video backup according to time and length of time to backup, backup can be accurate to seconds (backup accurate);

7, U disk backup file can be directly on the host playback query, provide more convenience for playback backup file;

8, The resolution of the standard, the resolution can be adjusted according to the display device, give full play to display the image effect;

9, Hard disk sequence writing, starting with zero track writing data, can improve efficiency of hard disk 2.5 times.

7-STAR[★]

Specifications:

Product Model		NVR 5160 16ch POE NVR
Operating System		Embedded LINUX operating system
Image Code Control		Image code quality adjustable, variable bitstream optional
Dual Stream		Each channel can set main stream and sub stream.
Video Standard		H.265
Monitoring Image Quality		5MP/3MP/1080P/960P/720P
Image Motion Detection		Each screen can set multiple detection areas and set 6-level sensitivity
Recording Playback Quality		1/4/8ch playback simultaneously
Region Cover Settings		Every channel can set 4 cover regions (IPC Supports)
Recording Mode		Support manual, auto, motion detection, alarm trigger record mode
Backup Way		Support U disk, USB mobile HDD, USB DVD-RW, network storage and backup
Operation Way		Mouse
Local Login		User name and password.
Recording Storage		Local HDD, network
External	Video Input (Mode)	1) 16x(1920x 1080) +sub[720x576]+4Ref.+1Play 16ch 2MP IP Camera
		2) 16x(1280x960) +sub[960x576]+4Ref.+8Play 16ch 1.3MP IP Camera
		3) 9x(2592x 1944) +sub[960x1576]+4Ref.+1Play 9ch 5MP IP Camera
		4) 9x(2048x1536) +sub[960x576]+4Ref.+4Play 9ch 3MP IP Camera
	Video Output	1ch HDMI / 1ch VGA
HDD	Network Port	2 RJ45,10M/100M/1000M self-adaptive LAN port
	USB Port	1xUSB
	HDD Port	2XSATA Ports
	Max Capacity	Support up to 6TB Per HDD Slot
	Port	16x 10/100Mbps Ethernet Ports for power
POE	Input Consumption	208W
	POE Standard	IEEE802.3af
Mobile Surveillance		Support(iPhone, Windows Mobile, Black Berry, Symbian,Android) smart phone
Power Supply		ATX100-240V 350W
Power Consumption		≤115W(without HDD)
Working Temperature		-10° C ~ +55° C
Working Humidity		10%-90%
Dimension		Equipment: 350mmx250mmx70mm
Weight(without HDD)		N.W.: 2.5Kg
Installation Way		Desktop Installation

7-STAR[★]

7-STAR[★]



70mm

250mm

350mm

7-STAR[★]

7-STAR[★]

16ch HD POE-NVR For 2 SATA

Support 16ch IP Camera Input

H.265



16ch POE Power supply standard IEEE803.2af



Excellent playback

Smooth playback screen, the picture is clear, and on-site environmental quality is almost the same, to support multi-channel playback, and local amplification, fixed playback, drag the progress, simple playback interface operation.



Not included HDD

7-STAR[★]

Support network monitoring, remote playback, remote video and control the NVR menu



Motion Detection

Support Multi-motion detection, trigger record/Alarm

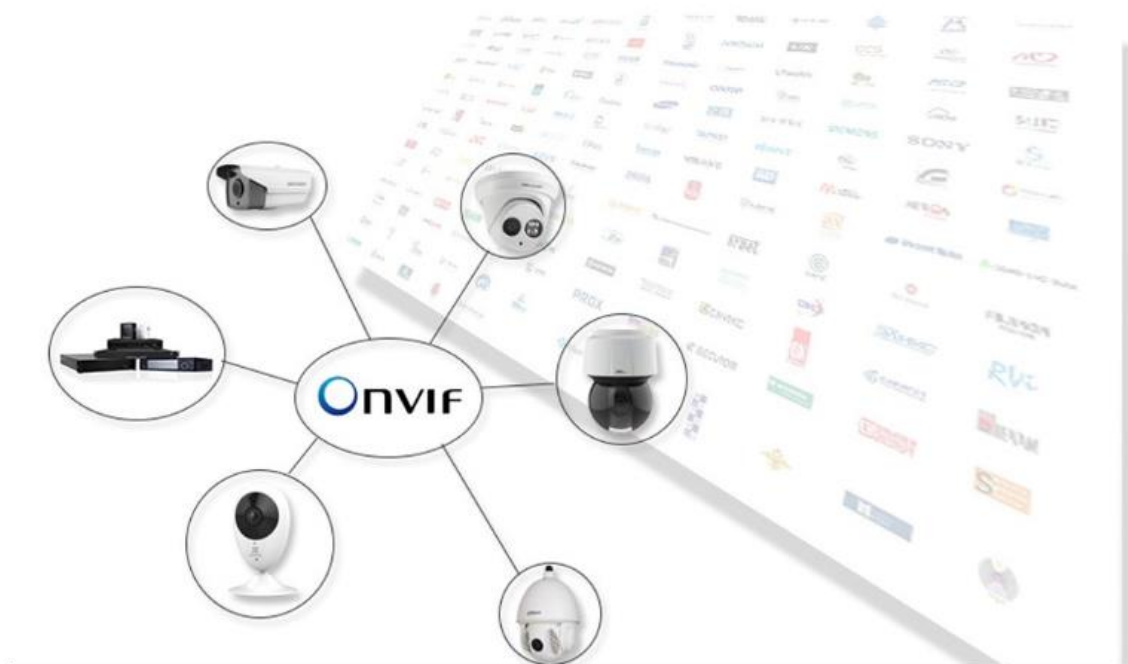
Motion detecting



7-STAR[★]

Onvif Protocol

Support onvif protocol, compatible with multi-brand ip camera



HDMI & VGA Monitoring output

Multi-channel mixed split screen output, up to 4K hd image resolution

