

7-STAR^{*}

Keypad RFID Access Control System Proximity Card Standalone 2000 Users Door Access Control



FS601

7-STAR[®]



7-STAR[®]



Access ways: Cards,
code, card + code

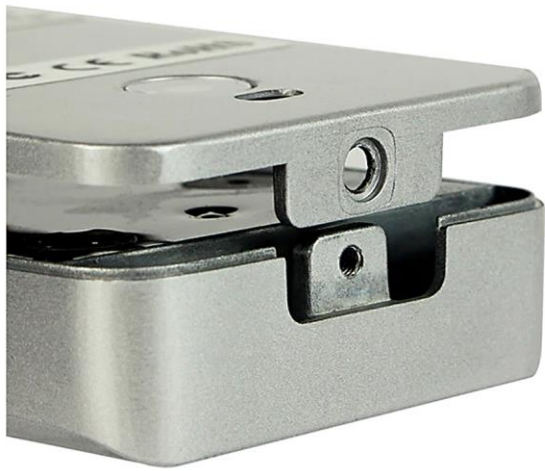


Card User;2000

Code User:2000



7-STAR[★]



7-STAR^{*}



7-STAR[★]

Metal keyboard

Metal keyboard with backlight.



LED status indicators

LED status indicators



7-STAR[★]

Specification:

Project	Indicators
Power Supply	12VDC + 10%
Unlock relay	12VDC/2A
Electric lock output	Max 3A
Alarm output	Max 20A
Output short-circuit protection time	Max 0.1ms
Effective Cards	2000
Ambient temperature	-45-60 degree centigrade
Relative humidity	10%-90% RH
Password	4 digit PIN code
proximity card reader the frequency	ID type: 125KHz
induction card identifying the type	ID type: EM or compatible
Card reader from	ID type: 3~6 CM
Electric locking interface	Relay output or input of optional
Open access	1
Doorbell button	1
Interface to an alarm	1
Add-in Reader Interface	1 WG26 interface
Size	118*56*20mm