

7-STAR[★]

7-STAR[★]

Full-HD Hybrid 8 Channel Digital Video Recorder



- H.264 video compression, 1080 p / 720 p / 960 H resolution HD, VGA & HDMI output.
- 720 p / 960 H / 1080 p
- 8 video in ports, 1 audio in / 1ch audio output + 2 pcs USB port
- P2P (cloud), no longer needs a port for the remote monitor.
- Smartphone, PC remote control. Application name: xmeye
- Motion detection and email alert
- Support multi languages English, Russian, Italian, Portuguese, Spanish, French, German. etc ..
- 6 in 1 Support for AHD / CVBS / TVI / CVI / XVI / IP cameras
- Motion detection and email alert / registration
- Support ONVIF



HD 1080P Video



Smart APP



H.264 Compression



CMS Management



Motion Detection

6 in 1
AHD/DVR/NVR
TVI/CVI/XVI

7-STAR[★]

7-STAR

Specification:

	Model	DVR811L/ 8CH
System	Main processor	Technical grade embedded microprocessor
	Operating system	Embedded LINUX operating system
	System resource	Multi-channel real-time recording synchronously, multi-channel real-time playback, multi-channel multi-user network operation,USB back up.
Interface	Operation interface	16bit real color GUI interface support mouse operation
	Display screen	1/4/8 screen (take analog channel as an example, other is base on the selected channel mode)
Video	Video standard	PAL/NTSC(720P)
	Image encode	H.264(High Profile); JPEG
	Monitor quality	Monitor: D1;VGA,HDMI:High definition Support:1920*1080/1280*720/1440*900/1280*1024/1024*768/800*600)
	Playback quality	1080P/ 720P/D1/CIF
	Encode capability	8*1080P(12FPS)
	Decode capability	8*1080P(12FPS)
	Multi-mode video input	AHD: 8*1080NH(12FPS); HVR: 8*1080P(AHD)+4*960P(IP) NVR: 16*1080P/8*960P/8*720P
	Motion detection	Each channel can set 192(16*12)detection area: can set multi-level of flexibility (for local analog channel only)
Audio	Audio compression	G711A
	Bidirectional talk	Support
Record and playback	Record mode	Manual>alarm>motion detection>timing
	Local playback	1/4/8 ch playback synchronously (take local analog input for example, other is depended on the selected channel mode)
	Video search	Time/date/event/channel search
Storage and back up	Space occupation	Video: CIF 4-5G/day*channel,D1 8-10G/day*channel;720p 20G/day*channel Audio:691.2M/day*channel
	Video storage	Local HDD/Network
	Back up mode	Network backup/USB portable HDD/USB imprint/SATA imprint
Interface	Video input	8CH BNC(1.0Vp-p,75ohm)
	Video output	1CH VGA, 1CH HDMI
	Audio input	1CH RCA
	Audio output	1CH RCA 200-3000mV,5K ohm)
	Alarm input	N/A
	Alarm output	N/A
	Network port	RJ45 10M/100M self-adaptive Ethernet port
	PTZ control	NO PTZ
	USB port	2*USB2.0
	HDD port	1 SATA ports
other	Power	12V/2A
	Consumption	<15W (not including HDD)
	Temperature	-20+55
	Humidity	10%-90%
	Atmosphere pressure	86kpa-106kpa
	Dimension	L255*W220*H45MM

7-STAR[★]

7-STAR[★]



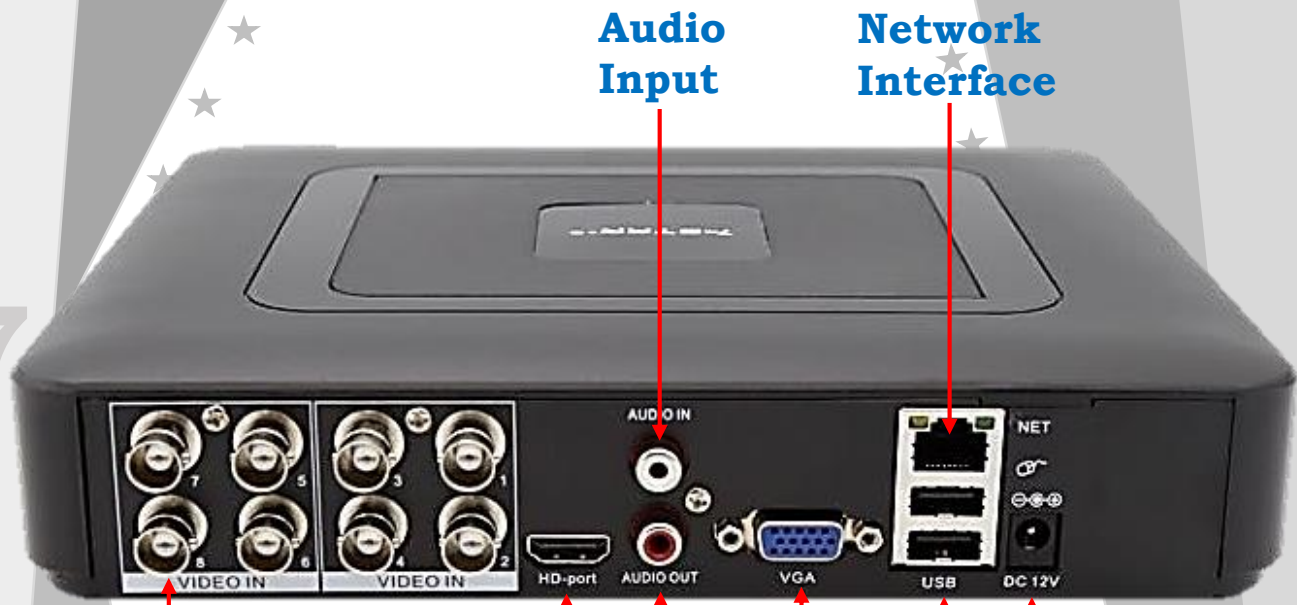
7-STAR[★]



7-STAR[★]

7-STAR[★]

7-STAR[★]



Audio Input

Network Interface

Video Input

HDMI Interface

Audio Output

VGA Interface

2*USB Interface

Power Interface

4.3cm

20cm

23.5cm

7-STAR[★]

P2P Remote Access

P2P Remote Access Can make your DVR plug and play, no need complex configuration

Easy Remote Access

P2P technology supports remote access On a mobile device. Just install APP on your phone By scanning the QR code or storing from the APP View the camera remotely anytime, anywhere. The



Download APP



Android



iOS

Input SN code



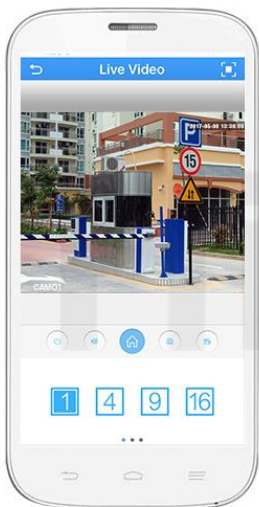
Live Viewing



Remote Access Anytime Anywhere



How To Monitor From APP



Scan below QR code to download&install XMEYE APP to your Phone



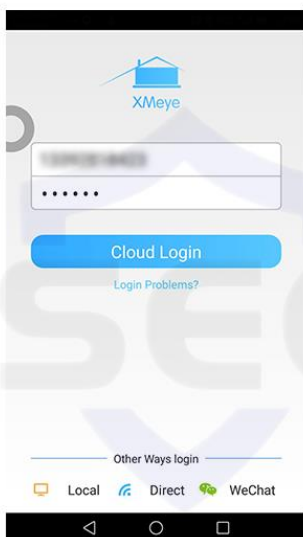
IPhone APP



Android APP



1. Downilad the APP

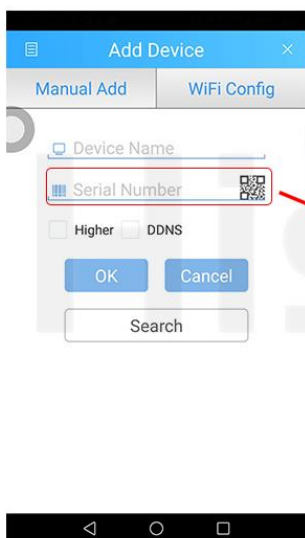


2. Register and login in account



Click "+" to add device
watch the world together

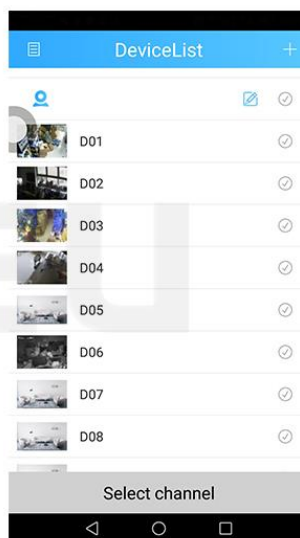
3. Click "+"



4. Input the serial No



Main menu>info>verison



5. Add device successfully

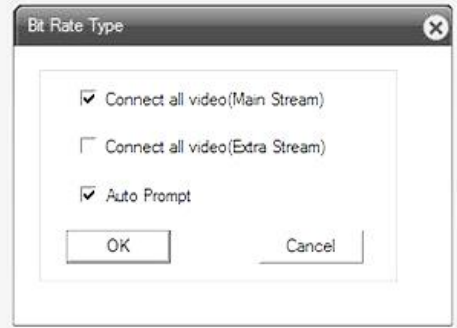
Remote View Very Easy Via Cloud Technology



Anywhere...Anytime....
Remote watch and playback



Website Interface Via IE



7-STAR[★]

7-STAR[★]

7-S

7-STAR[★]

7-STAR[★]



Package included:

- 1*AHD DVR**
- 1*Mouse**
- 1*Power Supply 12V 2A For AHD DVR**
- 1*User manual**